

Quick Installation Guide

EWS300AP
version 1.0

Wireless Managed Indoor Access Point

Package Contents

- + EnGenius EWS300AP Access Point
- + Power adapter (12V/1A)
- + Mounting bracket
- + T-Rail mounting kit
- + Mounting screw set
- + This Quick Installation Guide

Minimum Requirements

- + A computer running Windows 7
(Procedure for other OS's are similar)
- + Broadband Internet Service
(Cable or DSL Modem)
- + Internet Browser
(Internet Explorer, Safari, Firefox, Chrome)
- + EnGenius Wireless Management L2 Switch
(To use with EWS Series Management Switches)

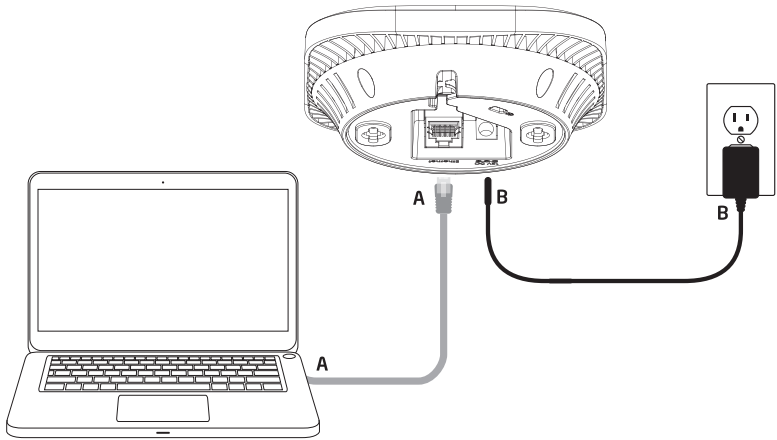


If the AP is deployed with an EWS Wireless Management Switch, follow the instructions in the EWS Switch Quick Installation Guide and connect the AP to your local network.

1 Connecting the Access Point

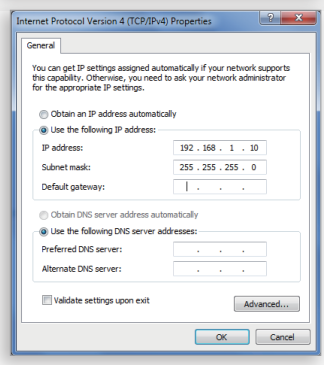
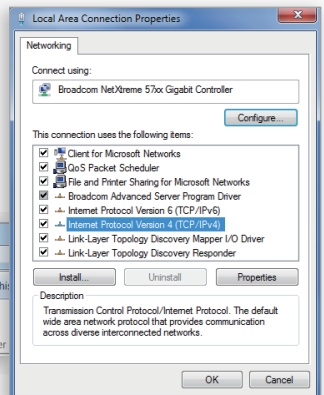
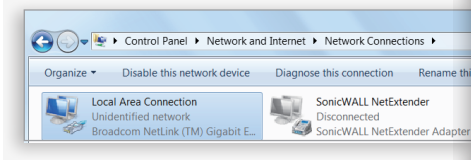
- Connect one end of the **Ethernet cable** into the **LAN port** of the Access Point and the other end to the **Ethernet port** on the computer.
- Connect the **Power Adapter** to the **DC-IN port** of the Access Point and plug the other end into an electrical outlet.
- Verify that the Power LED on the top of the device is a steady blue.

Note: The Access Point supports both **IEEE 802.3af** PoE (Power over Ethernet) or the included power adapter. You may use either one as the power source. **DO NOT use both at the same time.**



2 IP Address Configuration

- Once your computer is on, configure the setting of your network adapter.Open **Network Connections** > **Local Area Connection** > **Internet Protocol Version 4 (TCP/IPv4)** > **Properties**

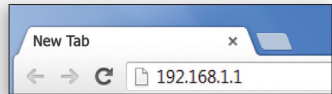


- Select **Use the following IP address** and make the following entries:
 - * **IP Address:** 192.168.1.10 (or any address in the 192.168.1.x network)
 - * **Subnet mask:** 255.255.255.0
 - * **Default gateway:** 192.168.1.1

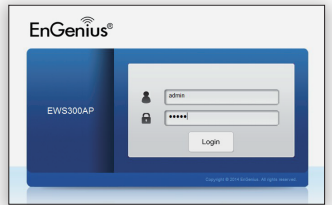
-) Click **OK** to save your changes.

3 Access Point Setup

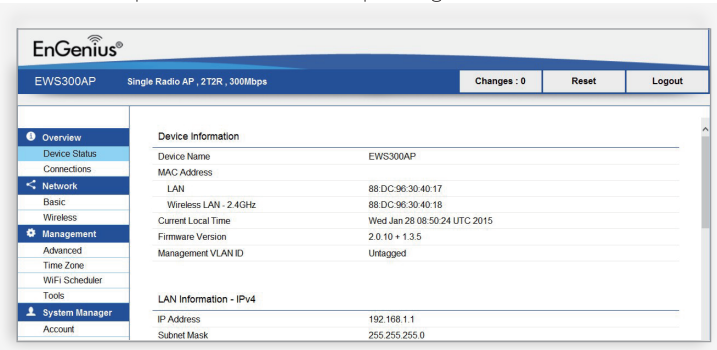
- Open a web browser on your computer. In the address bar of the web browser, enter **192.168.1.1** and **enter**.



- A login screen will appear. By default, the username of the Access Point is **admin** and the password is **admin**. Enter the current username and password of the Access Point and then click **Login**.



- The EnGenius Access Point User Interface will appear. This device can operate in Access Point operating mode.



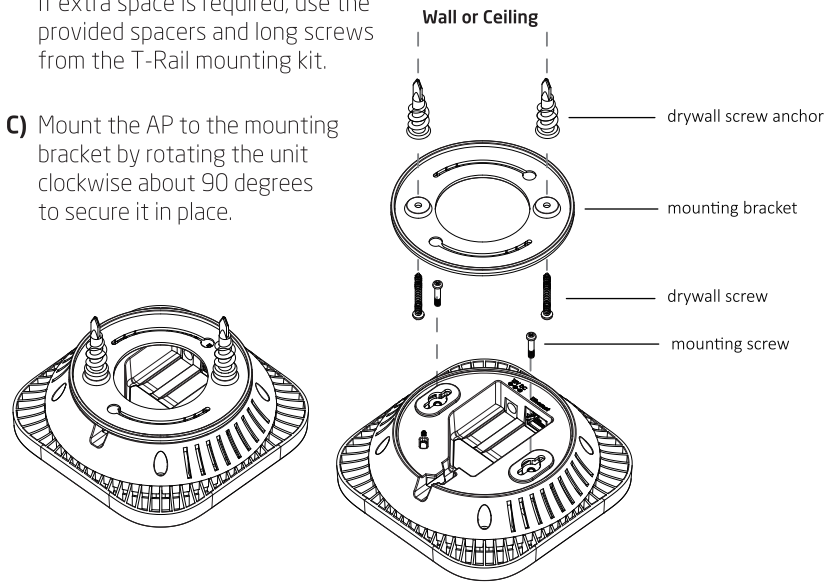
* Your model number may be different in the web browser interface.

Mounting the Access Point

The AP can be ceiling mounted or wall mounted depending on the setup.

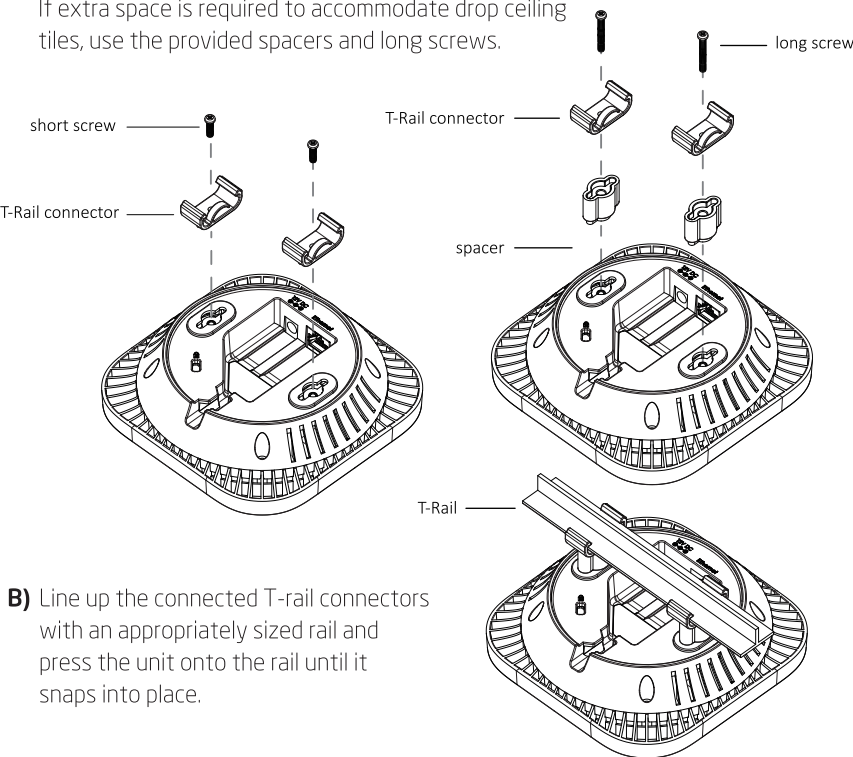
Mounting the AP to a flat surface

- Attach the mounting bracket to the wall or ceiling using the provided mounting kit.
- Insert the provided short screws into the mounting holes. Make sure there's enough space between the screws and unit for the mounting bracket. If extra space is required, use the provided spacers and long screws from the T-Rail mounting kit.
- Mount the AP to the mounting bracket by rotating the unit clockwise about 90 degrees to secure it in place.



Mounting the AP to a T-Bar

- Attach the T-rail connectors to the bottom cover of the AP using the provided short screws. Use appropriate size T-rail connectors (15/16" or 9/16"). If extra space is required to accommodate drop ceiling tiles, use the provided spacers and long screws.



- Line up the connected T-rail connectors with an appropriately sized rail and press the unit onto the rail until it snaps into place.

Technical Support

Country of Purchase	Service Center	Service Information
North America www.engeniuscanada.com	Canada	rma@engeniuscanada.com Toll Free: (+1) 888 397 2788 Local: (+1) 905 940 8181
www.engenius.tech	Los Angeles, USA	support@engeniustech.com Toll Free: (+1) 888 735 7888 Local: (+1) 714 432 8668
Central & South America es.engeniustech.com pg.engeniustech.com	Miami, USA	miamisupport@engeniustech.com Miami: (+1) 305 887 7378 Sao Paulo, Brazil: (+55) 11 3957 0303 D.F, Mexico: (+52) 55 1163 8894
Europe www.engeniusnetworks.eu	Netherlands	support@engeniusnetworks.eu (+31) 40 8200 887
Africa CIS Middle East Russia www.engenius-me.com	Dubai, UAE	support@engenius-me.com Toll Free: U.A.E.: 800-EnGenius 800-364-364-87 General: (+971) 4 357 5599
Asia Oceania www.engeniustech.com.sg	Singapore	www.engeniustech.com.sg/e_warranty_form techsupport@engeniustech.com.sg Toll Free: Singapore: 1800 364 3648
Others www.engeniusnetworks.com	Taiwan, R.O.C	technology@senao.com

Notes