

Upgrade Phase 1 (V1.1.2.0) to Phase 2(V.1.2.2.0) Procedure

Before upgrade to V1.2.2.0 firmware, please read the following notification.

If you does not agree, please stay current version.

a. After upgrading the V1.2.2.0 code, **you could not downgrade to V1.1.2.0**

(Reason: The RAM location already change)

b. If you have any problem, Please contact Edgecore TS for help .

1. Check current ECS2100 version:

Loader Version:0.1.1.6

Operation Code Version: 1.1.2.0

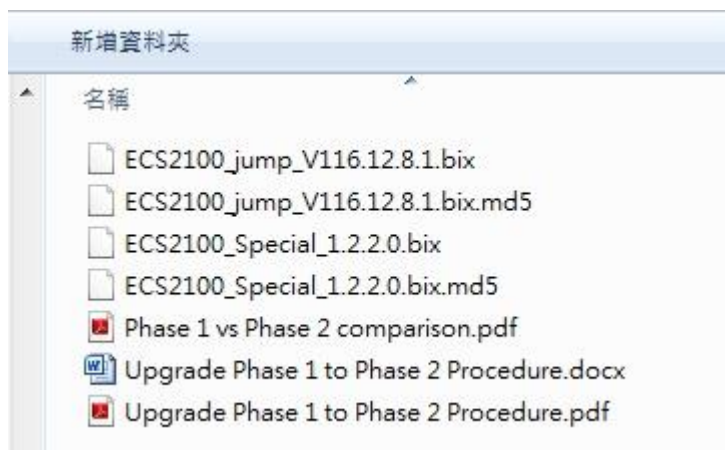
```
COM1:115200baud - Tera Term VT
File Edit Setup Control Window KanjiCode Help
CLI session with the ECS2100-10P is opened.
To end the CLI session, enter [Exit].

Console#dir
File Name                                     Type      Startup Modified Time      Size (bytes)
-----
Unit 1:
ECS2100_V1.1.2.0.bix                         OpCode    Y        2016-11-01 02:37:25      8069384
Factory_Default_Config.cfg                  Config    N        2016-10-05 02:01:51       477
startup1.cfg                                Config    Y        2016-08-03 09:18:32       961
-----
Free space for compressed user config files: 23699456

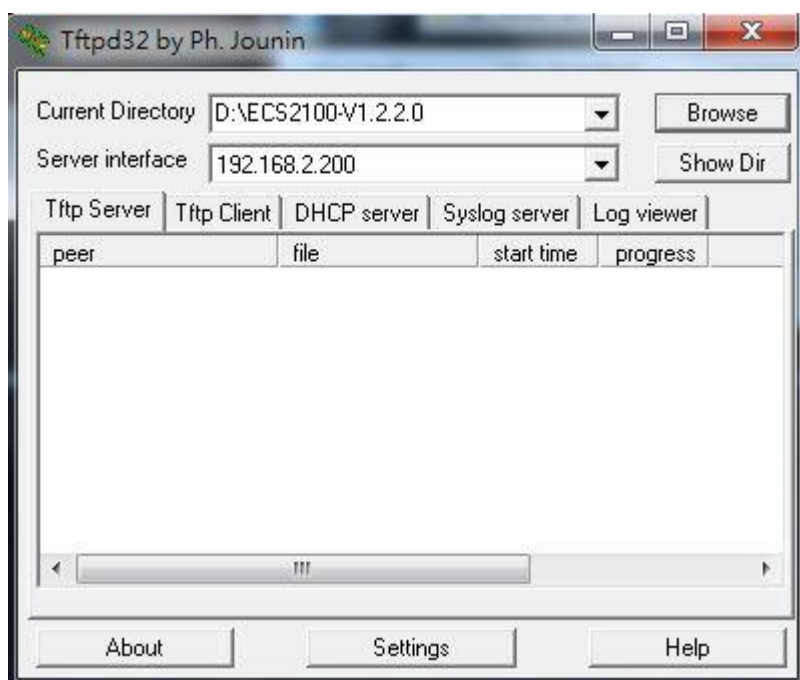
Console#show ver
Unit 1
Serial Number       : S123456
Hardware Version    : R01
Number of Ports     : 10
Main Power Status   : Up
Role                : Master
Loader Version      : 0.1.1.6
Linux Kernel Version : 2.6.19
Operation Code Version : 1.1.2.0

Console#
```

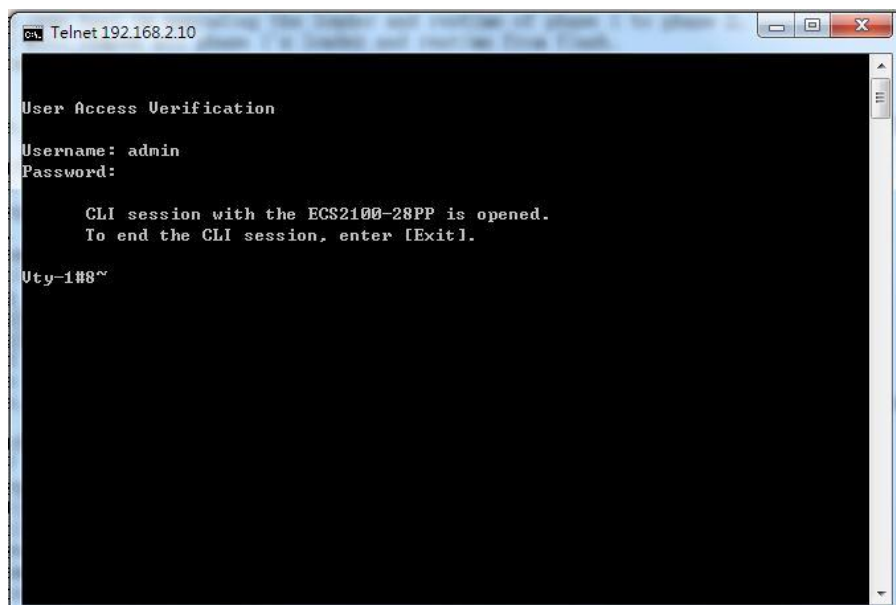
2. Copy **ECS2100_jump_V116.12.8.1.bix** & **ECS2100_Special_1.2.2.0.bix** to **D:\ECS2100-V1.2.2.0**



3. Run the TFTP server (Set the Directory to : **D:\ECS2100-V1.2.2.0**)



4. Use **Telnet** or **console** to connect the switch. (You can't upgrade by web gui).



5. Follow the steps to upgrade **"ECS2100_jump_V116.12.8.1.bix"**

Step1:

Console#copy tftp file

TFTP server IP address: 192.168.2.200

Choose file type:

1. config; 2. opcode: 2

Source file name: ECS2100_jump_V116.12.8.1.bix

Destination file name: ECS2100_jump_V116.12.8.1.bix

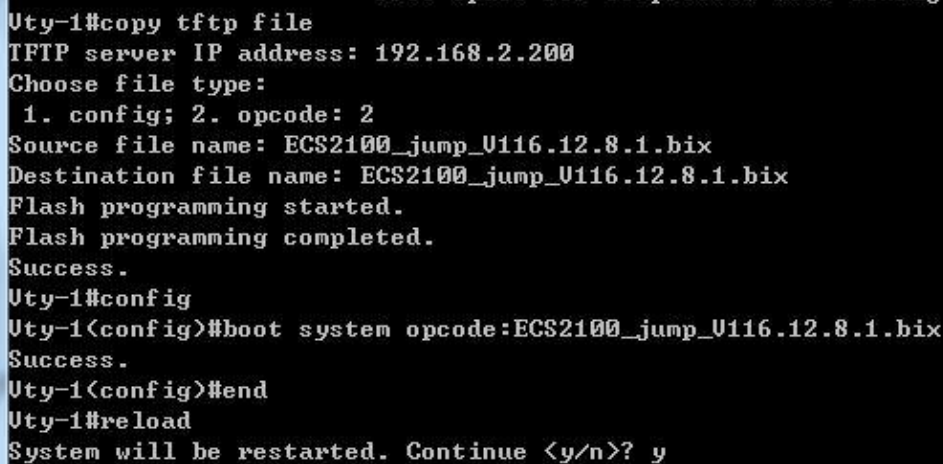
Console#config

Console(config)#boot system opcode:ECS2100_jump_V116.12.8.1.bix

Console(config)#end

Console#reload

System will be restarted. Continue <y/n>? y



```
Uty-1#copy tftp file
TFTP server IP address: 192.168.2.200
Choose file type:
  1. config; 2. opcode: 2
Source file name: ECS2100_jump_V116.12.8.1.bix
Destination file name: ECS2100_jump_V116.12.8.1.bix
Flash programming started.
Flash programming completed.
Success.
Uty-1#config
Uty-1(config)#boot system opcode:ECS2100_jump_V116.12.8.1.bix
Success.
Uty-1(config)#end
Uty-1#reload
System will be restarted. Continue <y/n>? y
```

6. Follow the steps to upgrade “ECS2100_Special_1.2.2.0.bix”

Step2:

Console#copy tftp file

TFTP server IP address: 192.168.2.200

Choose file type:

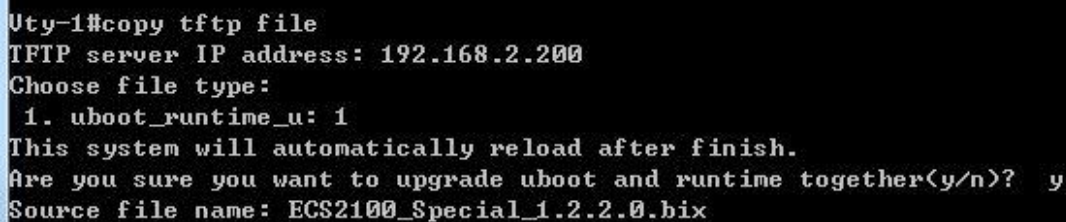
1. uboot_runtime_u: 1

This system will automatically reload after finish.

Are you sure you want to upgrade uboot and runtime together(y/n)? y

Source file name: ECS2100_Special_1.2.2.0.bix

<It will perform upgrade procedural and reload the DUT automatically.>



```
Uty-1#copy tftp file
TFTP server IP address: 192.168.2.200
Choose file type:
  1. uboot_runtime_u: 1
This system will automatically reload after finish.
Are you sure you want to upgrade uboot and runtime together(y/n)? y
Source file name: ECS2100_Special_1.2.2.0.bix
```

7. Check the version and file name and **Done**

- a. Loader :0.2.1.1
- b. Operation Code Version:1.2.2.0
- c. File name:runtime_p2.bix

```

Uty-1#show version
Unit 1
Serial Number      : EC1531002169
Hardware Version   : R01
Number of Ports    : 28
Main Power Status  : Up
Role               : Master
Loader Version     : 0.2.1.1
Linux Kernel Version : 2.6.19
Operation Code Version : 1.2.2.0

Uty-1#dir
File Name                                     Type      Startup Modified Time      Size (bytes)
-----
Unit 1:
runtime_p2.bix                               OpCode    Y      2016-12-08 09:01:10      8597768
Factory_Default_Config.cfg                  Config    N      2015-12-04 06:37:14        477
startup1.cfg                                Config    Y      2016-01-04 06:10:44       1524
-----
Free space for compressed user config files: 23146496
Total space: 32 MB

Uty-1#

```

8. **ECS2100_jump_V116.12.8.1.bix** and **ECS2100_Special_1.2.2.0.bix** are special codes for upgrading phase1 to phase 2 purpose only.
(It is not the same with ECS2100_V1.2.2.0.bix)

Firmware Name	Purpose
ECS2100_jump_V116.12.8.1.bix	For upgrade v1.1.2.0 to v1.2.2.0 use
ECS2100_Special_1.2.2.0.bix	For upgrade v1.1.2.0 to v1.2.2.0 use
ECS2100_V1.2.2.0.bix	For V1.2.2.0 use.