

QVF7309

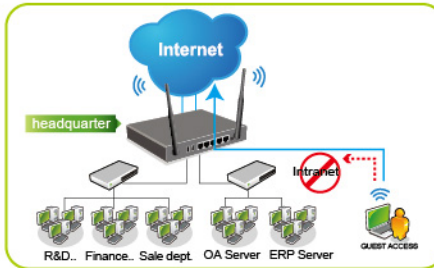


Dual-WAN Wireless QoS VPN Firewall Router QVF7309 for Superior Wireless Performance, Clarity, and Coverage

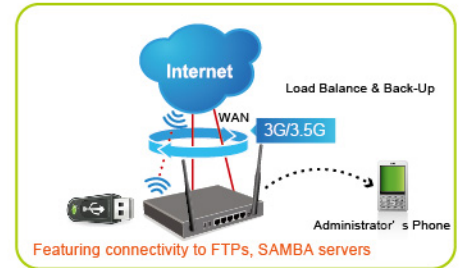
The QNO Wireless QoS VPN Firewall Router (QVF7309) is an 802.11b/g/n compliant device that delivers up to 300Mbps. Connect the QVF7309 to a cable or DSL modem and provide high-speed Internet access to multiple computers, game consoles, and media players. The Setup Wizard will guide you through setting up a secure wireless network to share photos, files, music, videos, printers, and network storage.

Equipped with two external antennas, this router provides superior wireless coverage for larger homes and offices, or for users running bandwidth-intensive applications. The QVF7309 also includes a 2-Port WAN with load balance and redundancy to guarantee business essential data exchange.

With wireless classification technology (WMM) and our intelligent L7 Router, jitter-free Internet phone calls (VoIP), high-definition video streaming and Web gaming are achievable on your wired and wireless networks. Support for WEP, WPA, and WPA2 security standards ensure that you will be able to use the best possible encryption regardless of your other wireless devices. To protect your local area network, the QVF7309 uses Guest Networks Access to help manage the guest wireless network. Below is a list of QVF7309 features.



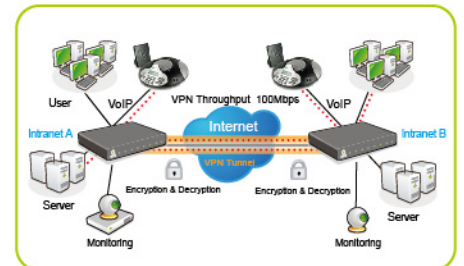
- Guest Networks Access



- Multi-Functional Built-in USB ports

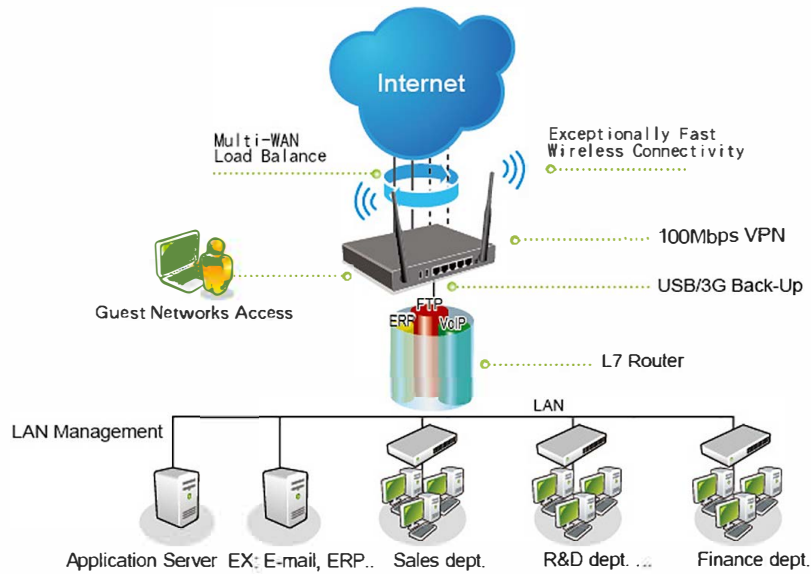


- L7 VIP Priority Channel+WMM



- IPSec VPN

QVF7309 can be implemented in Small & Medium Business office



Model Name	QVF7309
Network Processor	MTK 700 MHz Network Processor
Flash/DRAM	16M/128M
WAN Port	1~2 (10/100Mbps)
DMZ Port	N/A
LAN Port	3~4 (10/100Mbps)
USB Port	2
Wireless Antenna	2
Wireless Operating Frequency	2.4GHz
Sessions	12000
NAT Throughput	200Mbps
VPN Tunnels	Max. 10
VPN Throughput	100Mbps
Wireless Data rate(support 802.11b/g/n)	Up to 300Mbps
WPS	PBC/PIN
Encryption	64/128-bit WEP, WPA2/WPA, WPA2/WPA-Enterprise, RADIUS
Line Backup/Load Balance	•
Guest Networks Access	•
Wireless MAC Filter	•
WDS	•
WMM	•
SSID	4
The number of assignable IP	1 Class C
QoS Bandwidth Management	•
L7 Management - Blocking	•
L7- Priority Channel	•
PPTP VPN Server	Max.5
SMS	•
3G/3.5G Backup Mode	•
3G/3.5G cost of count	Measurement/Timing
USB Samba/FTP Server	•(FAT32/ FAT16)
Recommended PC Number	30~50
Size	190x130x40mm